

Konfigurační a analytické nástroje

Petr Koloros

p.koloros@sh.cvut.cz

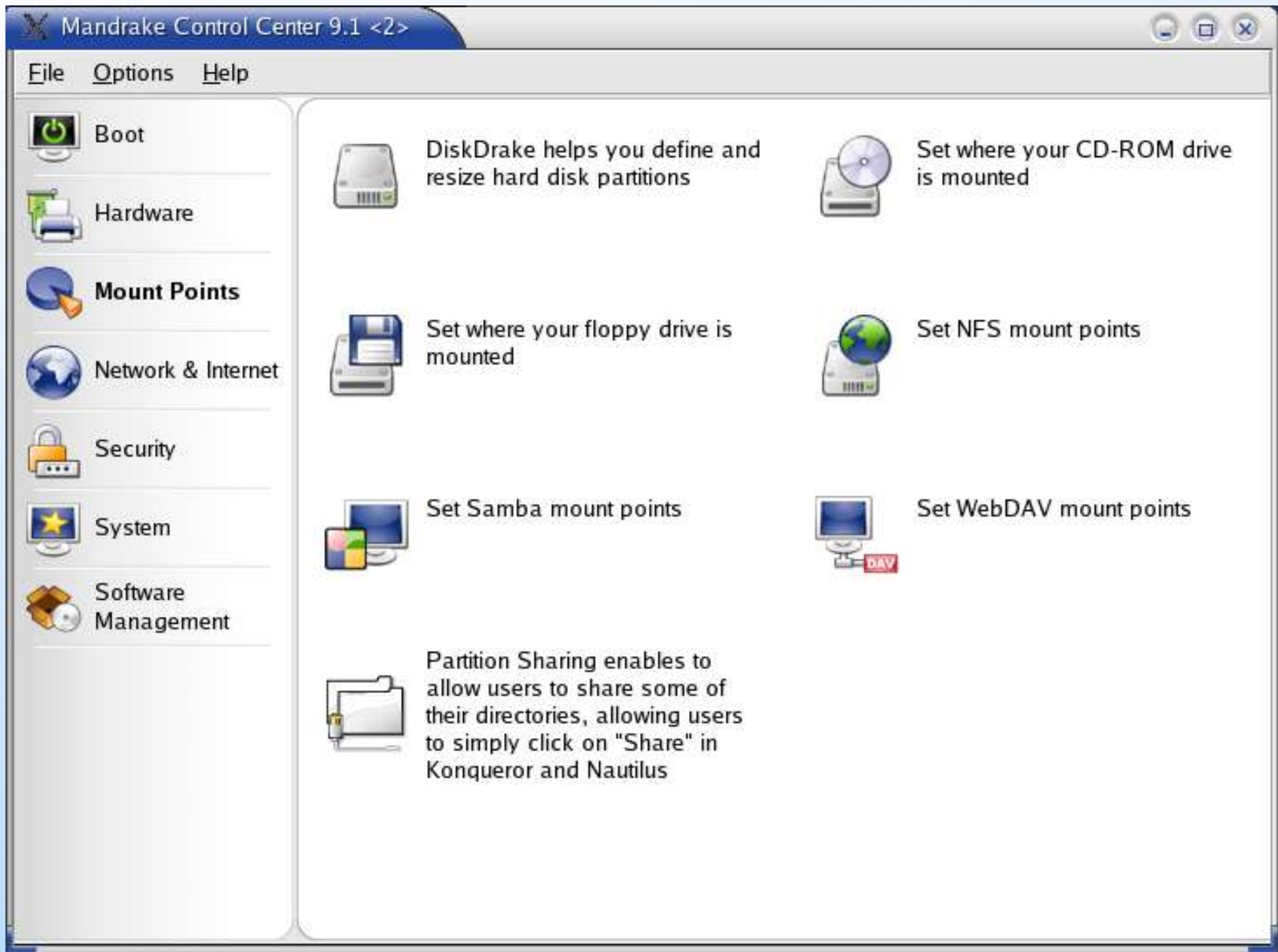
InstallFest 2003

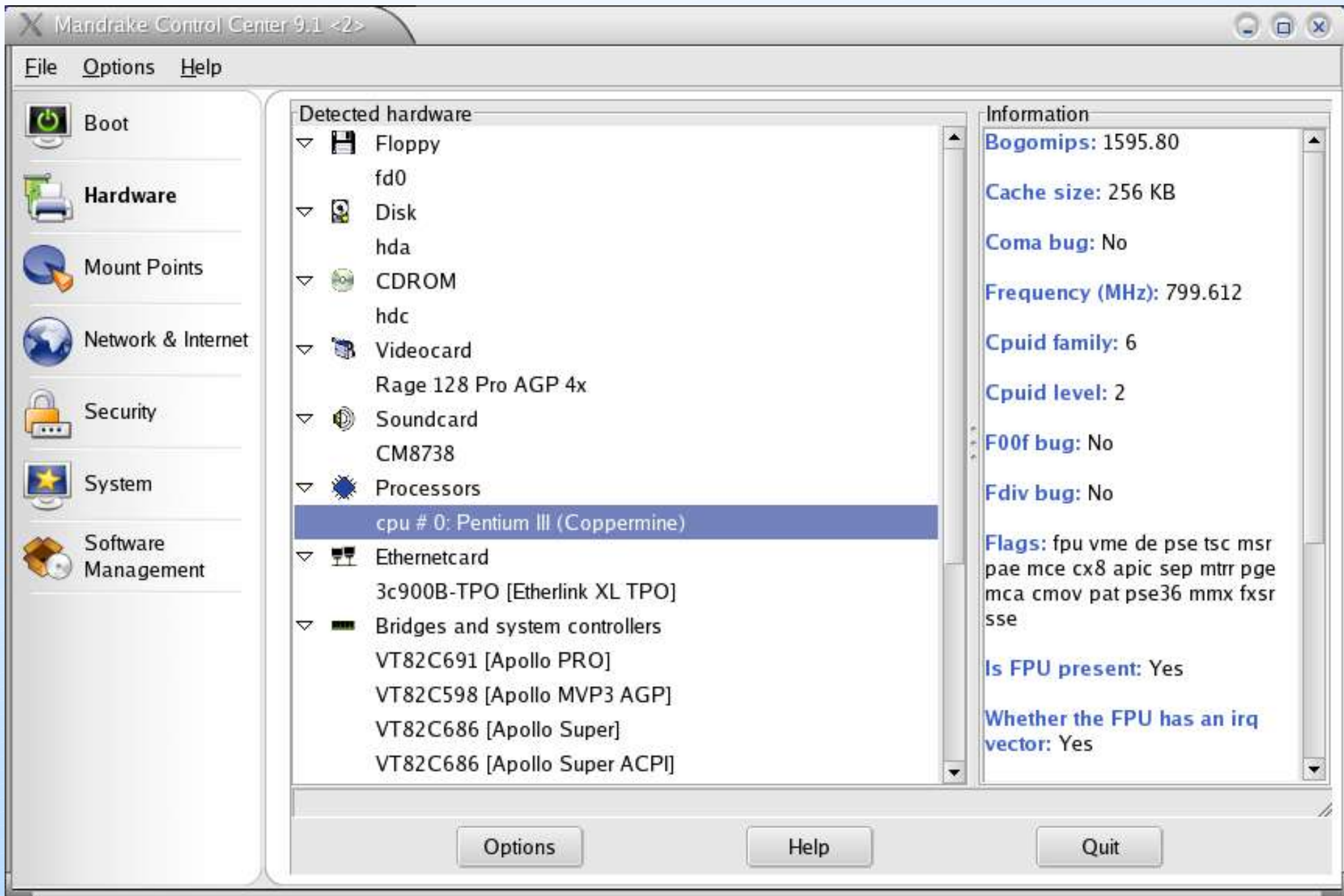
Konfigurační nástroje

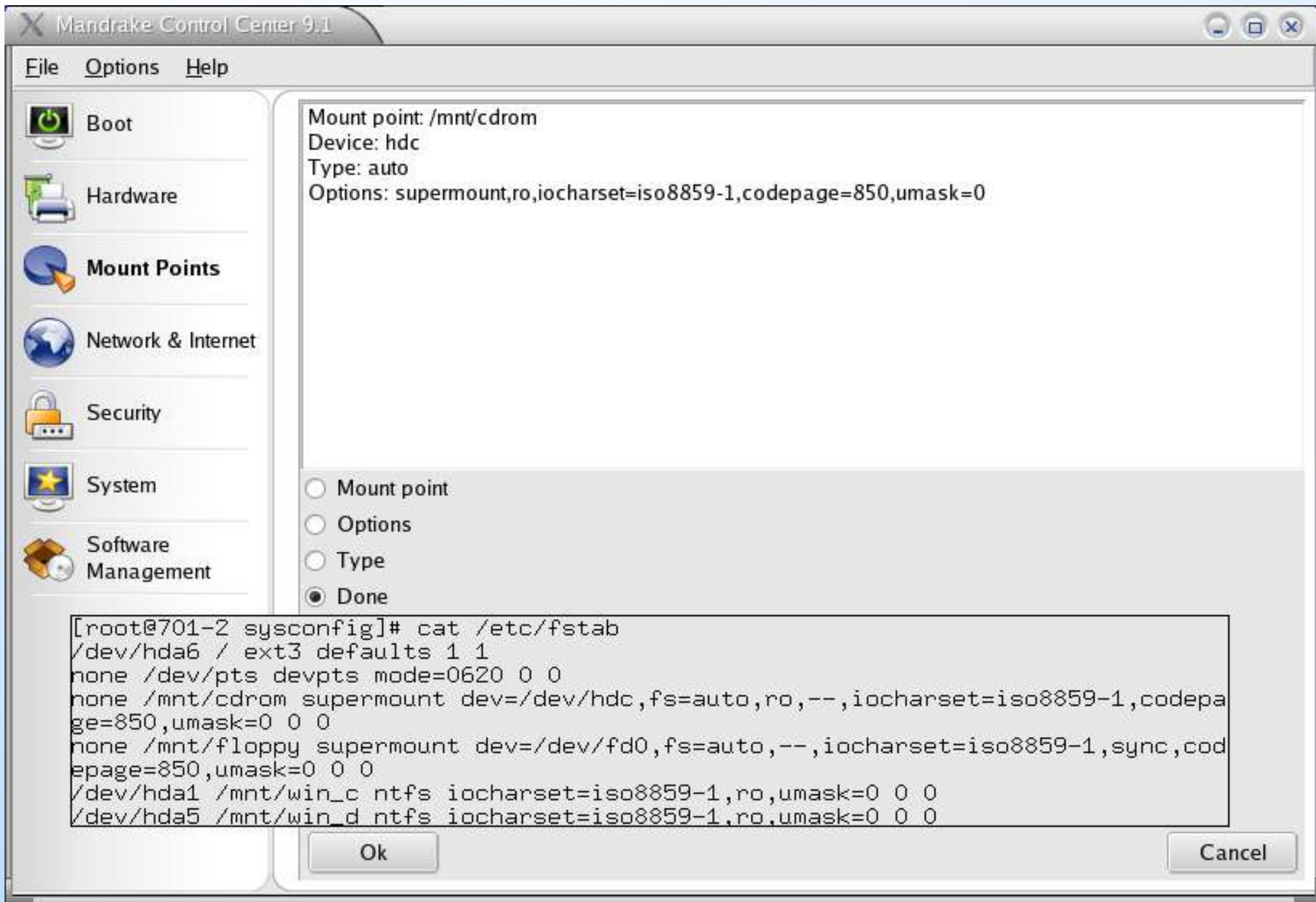
- ♦ Grafické i textové
- ♦ Ulehčují konfiguraci
- ♦ Uživatelský příjemnější
- ♦ Závislé na nainstalovaných prostředcích

Grafické konfigurační nástroje

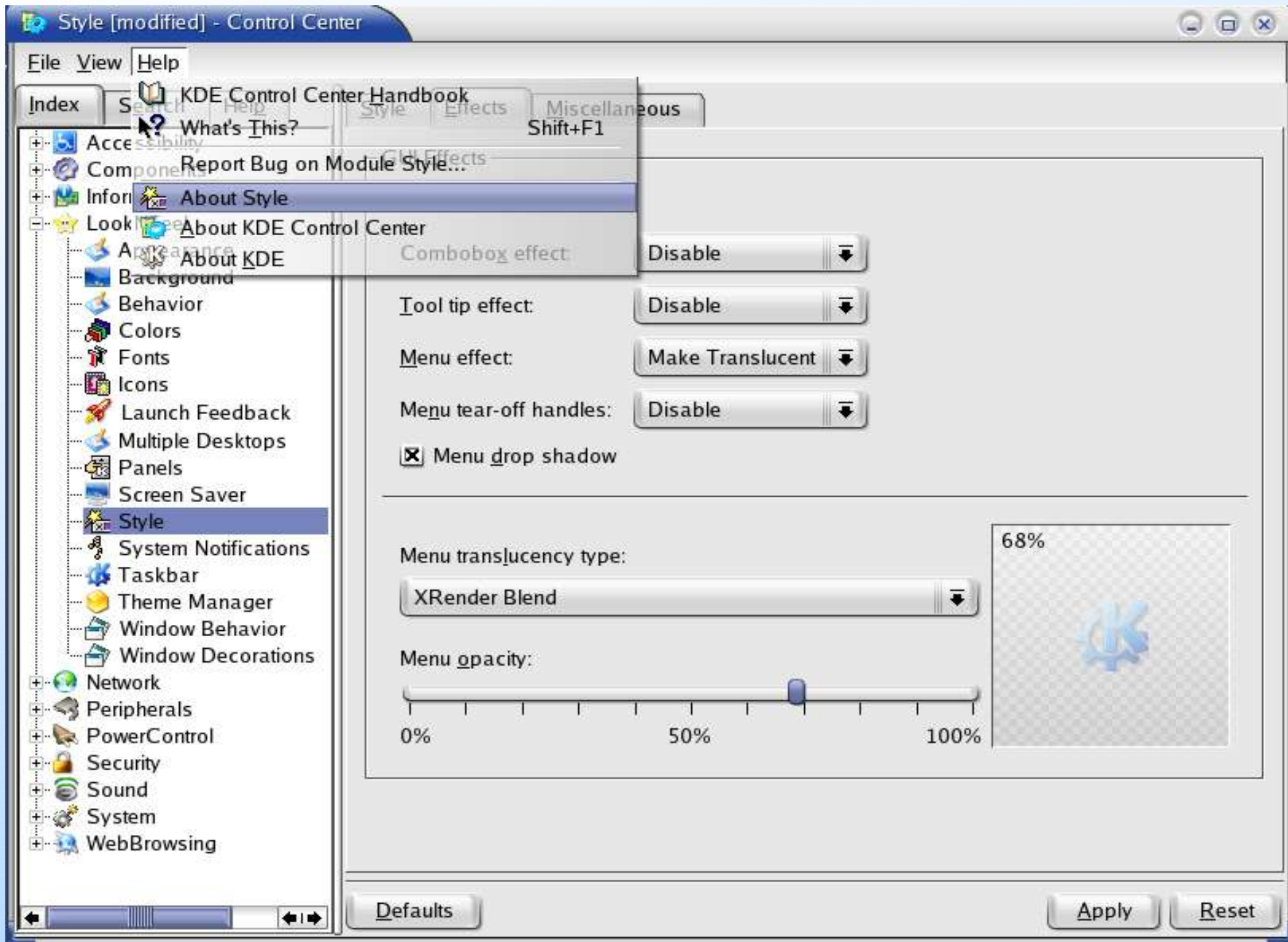
- ♦ Vlastní pro distribuce (**Mandrake**, **RedHat**, ..)
- ♦ Součástí desktopového prostředí (**KDE**, **Gnome**)
- ♦ Jednoduché na ovládání - intuitivní
- ♦ Pěkné a přehledné



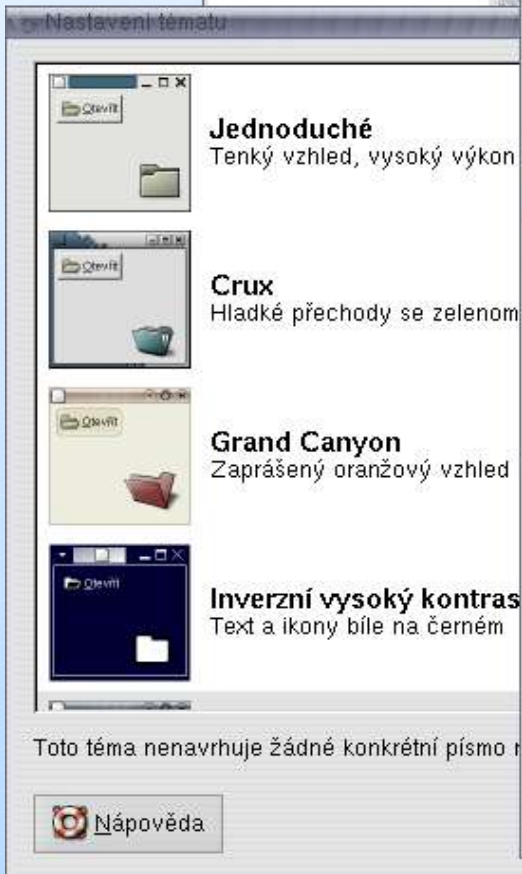
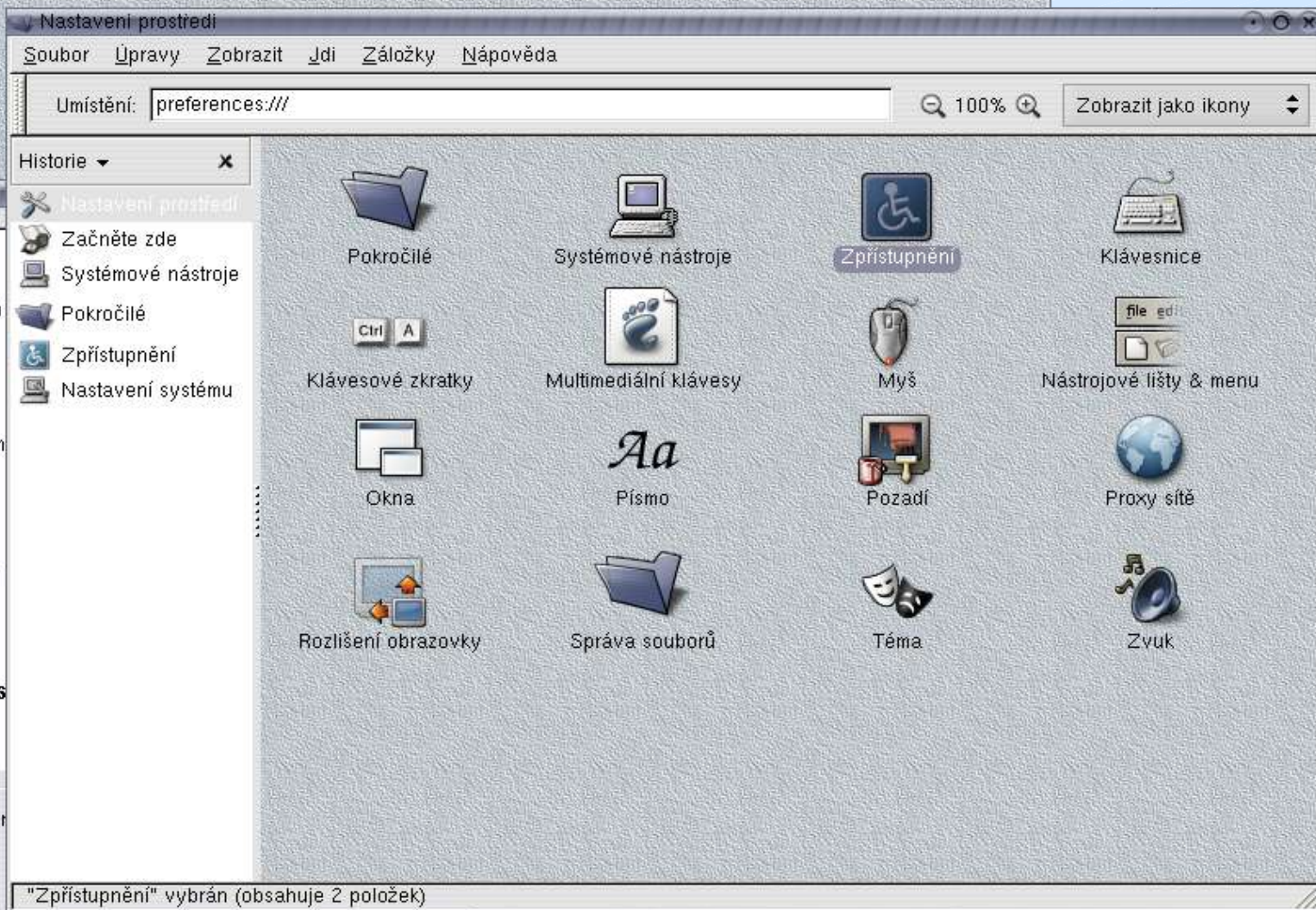
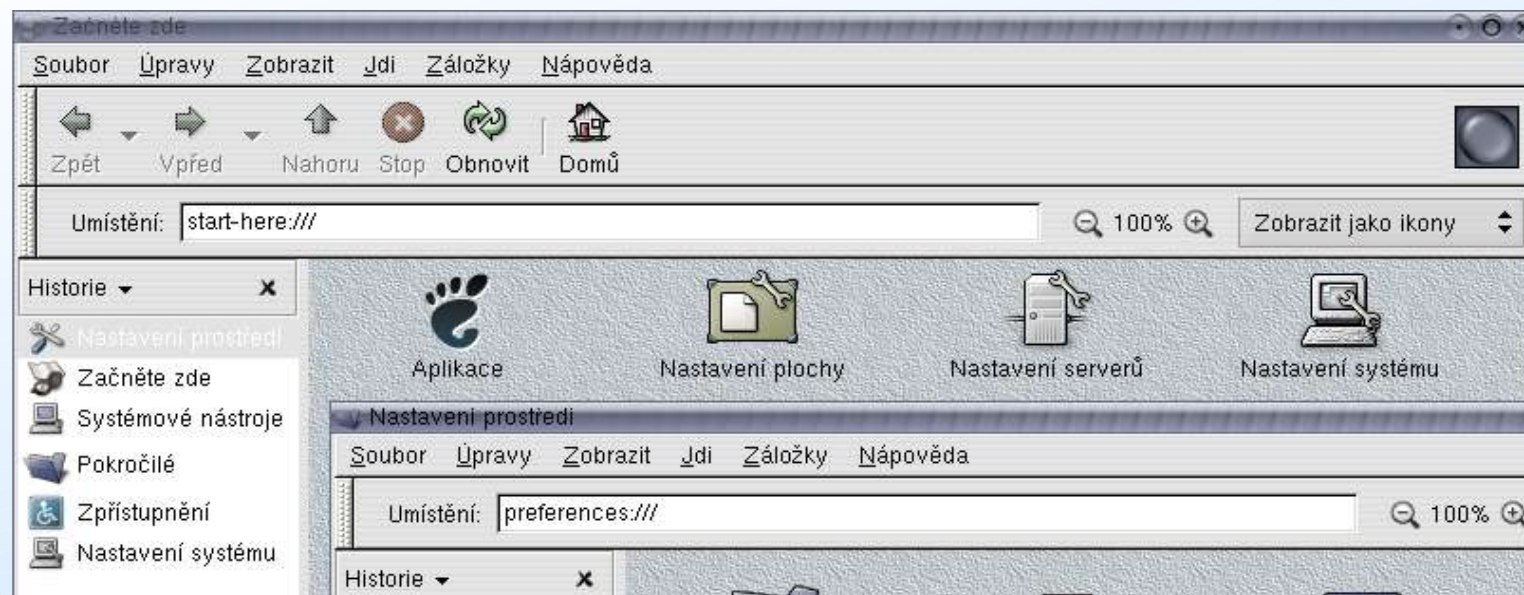


















InstallFest 2003 / Konfigurační a analytické nástroje - KDE



InstallFest 2003 / Konfigurační a analytické nástroje - Gnome

[Webmin](#) [System](#) [Servers](#) [Networking](#) [Hardware](#) [Cluster](#) [Others](#)

 Backup System	 Bootup and Shutdown	 CD Backup	 Change Passwords
 Disk Quotas	 Disk and Network Filesystems	 Filesystem Backup	 MON Service Monitor
 PAM Authentication	 Running Processes	 Scheduled Commands	 Scheduled Cron Jobs
 Security Sentries	 Software Packages	 SysV Init Configuration	 System Documentation
 System Logs	 Users and Groups	 isdn4linux control	

[Webmin Index](#)
[Help..](#)
[Module Config](#)

Network Utilities

Written by
[Tim Niemueller](#)
[Home://page](#)



[Ping](#)



[Traceroute](#)



[Lookup](#)



[Nmap](#)



[IP Subnet Calculator](#)



[Whois](#)



[Dig](#)

[Network Utilities 0.80.1]

Hostname	Ping	Traceroute	Nslookup	Nmap	Dig
<input type="text"/>	<input type="button" value="Ping It!"/>	<input type="button" value="Trace It!"/>	<input type="button" value="Look Up!"/>	N/A	<input type="button" value="Dig It!"/>

Edit Boot Kernel

Boot Kernel Options

Name	<input type="text" value="linux"/>	Kernel to boot	<input type="text" value="/boot/vmlinuz"/> ...
Kernel options	<input type="radio"/> Default <input checked="" type="radio"/> Add options.. <input type="radio"/> Replace options.. <input type="text" value="quiet devfs=mount"/>		
Root device	<input type="radio"/> From kernel <input type="radio"/> Current root <input checked="" type="radio"/> Device .. <input type="text" value="/dev/hda6"/>		
Initial ramdisk file	<input type="radio"/> Default <input checked="" type="radio"/> <input type="text" value="/boot/initrd.img"/> ...		
Root mount mode	<input type="text" value="Read-only"/> ▾	VGA text mode	<input type="text" value="Other"/> ▾ <input type="text" value="788"/>
Remember user kernel options?	<input type="radio"/> Yes <input checked="" type="radio"/> No	Skip kernels that do not exist?	<input type="radio"/> Yes <input checked="" type="radio"/> No
Boot password	<input checked="" type="radio"/> None <input type="radio"/> <input type="text"/>		
Password needed for	<input type="radio"/> Booting kernels with extra options <input checked="" type="radio"/> Any booting		

Save

Delete

Textové konfigurační nástroje

- ♦ Méně náročné
- ♦ Vhodné pro servery a dálkovou správu

RDC-8.feld.cvut.cz; Linuxconf 1.29 (subrev 3)
This is the main entry to Linux configuration.

Use the TAB key to navigate between the field section and the button bar at the bottom.
Check out the help for this screen. It is an introduction to Linuxconf

Config

- Networking**
- Users
- File systems
- Miscellaneous
- Peripherals
- Boot

Control

- Control panel
- Linuxconf mana

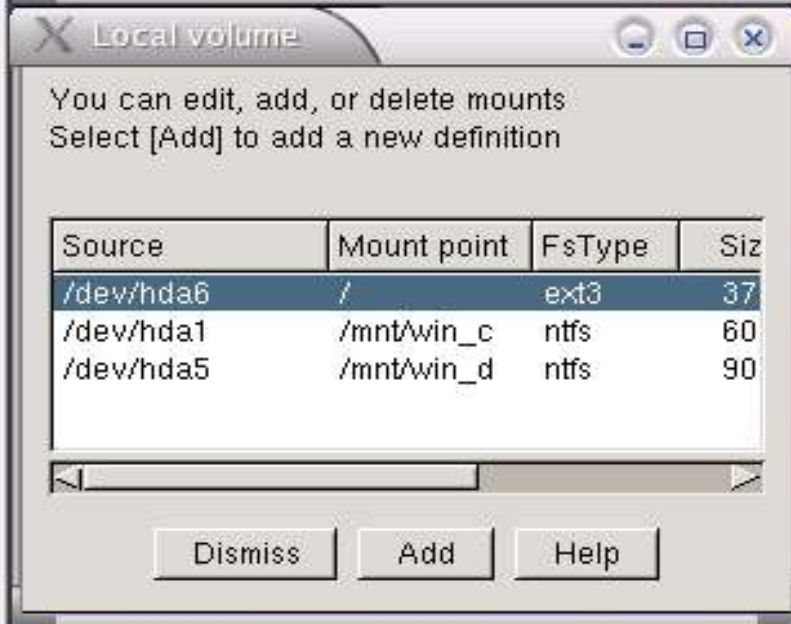
Quit

Service control

You can selectively enable or disable any services. You can disable services on a permanent basis or on a temporary basis. Temporary means that Linuxconf will remind you about those and will reactivate them at the next reboot.

Name	Enabled	Running
acpi	Manual	
acpid	Manual	
alsa	Automatic	Running
apmd	Automatic	Running
atd	Automatic	Running
chargen (tcp)	Disabled	
chargen (udp)	Disabled	
crond	Automatic	Running
cups	Automatic	Running
cvspservr	Disabled	

Dismiss Help



Ruční konfigurace

- ♦ Pro zkušené
- ♦ Největší možnosti
- ♦ Nejméně náročné na prostředky
- ♦ Nejlepší možnost zálohování a distribuování


```

# This is a basic ProFTPD configuration file (rename it to
# 'proftpd.conf' for actual use.  It establishes a single server
# and a single anonymous login.  It assumes that you have a user/group
# "nobody" and "ftp" for normal operation and anon.

ServerName          "ProFTPD Default Installation"
ServerType          standalone
DefaultServer       on

# Port 21 is the standard FTP port.
Port                21
# Umask 022 is a good standard umask to prevent new dirs and files
# from being group and world writable.
Umask               022

# To prevent DoS attacks, set the maximum number of child processes
# to 30.  If you need to allow more than 30 concurrent connections
# at once, simply increase this value.  Note that this ONLY works
# in standalone mode, in inetd mode you should use an inetd server
# that allows you to limit maximum number of processes per service
# (such as xinetd)
MaxInstances        30

# Set the user and group that the server normally runs at.
User                nobody
Group               nogroup

# Normally, we want files to be overwriteable.
<Directory /*>
  AllowOverwrite    on
</Directory>

# A basic anonymous configuration, no upload directories.
<Anonymous ~ftp>
  User              ftp
  Group             ftp
  # We want clients to be able to login with "anonymous" as well as "ftp"
  UserAlias         anonymous ftp

```

Analytické nástroje

- ♦ Přehled a management prostředků a procesů
- ♦ Grafické i textové.

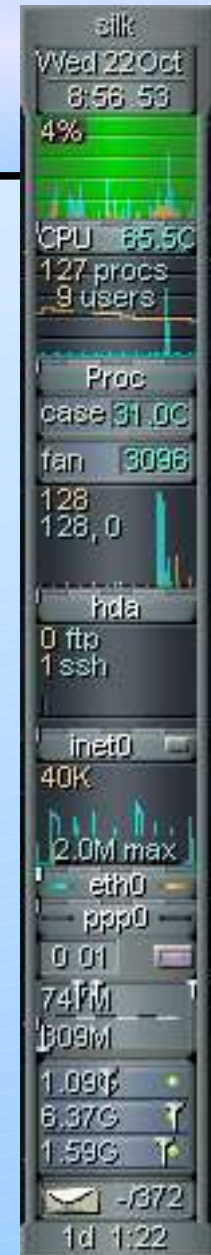
lm_sensors

- ♦ Informace o rychlosti větráků, teplotě, napětích, ..
- ♦ Používá I²C sběrnici (nebo ISA)
- ♦ Skrze moduly do jádra
- ♦ Závisí na použitém čipu v motherboardu
- ♦ Konsolové i grafické nadstavby
 - ♦ gkrellm, ksensors, applety, ..

lm_sensors – ukázky

```
silk@silk:~$ sensors
w83697hf-isa-0290
Adapter: ISA adapter
Algorithm: ISA algorithm
VCore:      +1.66 V (min = +1.71 V, max = +1.88 V)
+3.3V:      +3.18 V (min = +3.13 V, max = +3.45 V)
+5V:        +4.77 V (min = +4.72 V, max = +5.24 V)
+12V:       +12.46 V (min = +10.79 V, max = +13.19 V)
-12V:       -12.39 V (min = -13.21 V, max = -10.90 V)
-5V:        -5.17 V (min = -5.26 V, max = -4.76 V)
V5SB:       +5.38 V (min = +4.72 V, max = +5.24 V)
VBat:       +3.36 V (min = +2.40 V, max = +3.60 V)
fan1:       3096 RPM (min = 3000 RPM, div = 2)
fan2:       0 RPM (min = 3000 RPM, div = 2)
temp1:      +31°C (limit = +60°C)
temp2:      +65,5°C (limit = +60°C, hysteresis = +50°C)
ALARM
alarms:
beep_enable:
             Sound alarm disabled

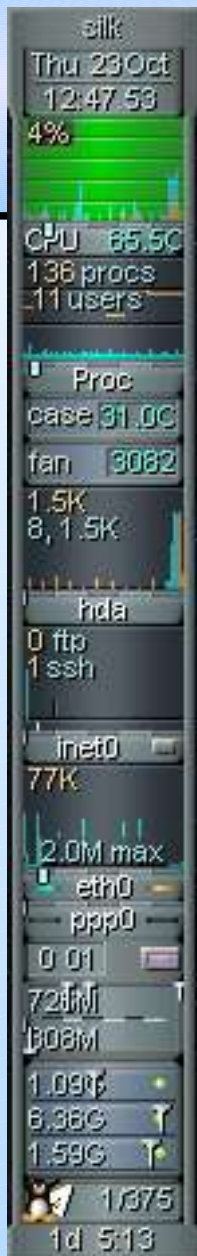
silk@silk:~$
```



GKrellM

- ♦ Gtk KeRnEL Monitors (nebo Meters)
- ♦ Panel mnoha zajímavých ukazatelů
- ♦ Dobře konfigurovatelný
- ♦ Možnost zásuvných modulů

GKrellM



Čas a datum

CPU vytížení

Teplota CPU

Procesy

Teplota v case a rychlost větráku

Toky (read/write) na disku hda

Uživatelé na portech SSH a FTP

Objem protékajících dat síťovou kartou

Ovládání modemu

Využití RAM (free/swap)

Volná kapacita na diskových oddílech

Maily (nových/celkem)

Čas souvislého běhu systému

Analytické nástroje

- ♦ Management procesů (*grafické*, konzolové)
 - ♦ *Gnome-system-monitor*
 - ♦ *KDE strážce systému*
 - ♦ Ps, top, kill
- ♦ Další časté nástroje
 - ♦ w, who, last - uživatelé v systému
 - ♦ Df, free, uptime – zdroje a využití

Sledování systému

Soubor Úpravy Zobrazit Nápověda

Seznam procesů Sledování zdrojů

Hledat: Zobrazit:

Jméno procesu	Uživatel	Paměť	% CPU
-bash	silc	1,5 MB	0
sh	silc	1,1 MB	0
xinit	silc	600 KB	0
sh	silc	1,1 MB	0
gnome-session	silc	7,4 MB	0
bonobo-activation-server	silc	2,5 MB	0
esd	silc	884 KB	0
FahCore_65.exe	silc	4,7 MB	0
FAH3Console-LinuxB.exe	silc	1,9 MB	0
file-roller	silc	5,7 MB	0
fish-applet-2	silc	5,8 MB	0
gconfd-2	silc	20,0 MB	0
gkrellm	silc	2,8 MB	1
gnome-panel	silc	12,2 MB	0
gnome-settings-daemon	silc	6,0 MB	0
gnome-smproxy	silc	2,6 MB	0
gnome-terminal	silc	19,2 MB	1
-bash	silc	1,5 MB	0
-bash	silc	1,5 MB	0
gimp	silc	21,7 MB	0

Více informací >>

Sledování systému

Soubor Úpravy Zobrazit Nápověda

Seznam procesů Sledování zdrojů

Historie CPU

Použité CPU: 100,00 %

Historie použití paměti a odkládacího prostoru

Použitá paměť: 1000 MB z 1009 MB

Použitý odkládací prostor: 79,5 MB z 322 MB

Zařízení

Jméno	Adresář	Typ	Celkem	Použito	
/dev/loop/2	/home	reiserfs	8,0 GB	6,7 GB	84 %
/dev/ide/host0/bus0/target0/lun0/part1	/	reiserfs	2,0 GB	888 MB	44 %
/var/opt	/opt	bind	47,0 GB	42,4 GB	90 %
tmpfs	/tmp	tmpfs	400 MB	5,2 MB	1 %
/dev/loop/4	/var	reiserfs	47,0 GB	42,4 GB	90 %

Process Watch - 28693@silk (0.50 sec polling)

Size / RSS

60252K

SIZE min=60252K max=60252K
RSS min=4940K max=4940K

CPU (userland) (kernel space)

Userland: 4860147 jiffies Kernel: 0

Process Name: FahCore_65
Command Line: ./FahCore_65
Process Started: Thu Oct 30 11:03:52
Watch Started: Fri Oct 31 01:01:13
Process is still Running

gPS: Process List (silK)

View Filter Action Network

PID	Name	Owner	Host	State	%CPU	Size	RSS	Nice	Pri	Start
28693	FahCore_65	silK	silK	R N	96.5	60252K	4940K	19	19	11:03:52 Thu Oct 30 2003
7505	gkrellm	silK	silK	S	1.0	8940K	3860K	0	9	11:14:59 Wed Oct 29 2003
32630	gps	silK	silK	R N	0.9	652K	104K	0	19	11:03:52 Thu Oct 30 2003
7436	X	silK	silK	S	0.6	4096K	104K	0	19	11:03:52 Thu Oct 30 2003
7534	gnome-termi	silK	silK	S	0.2	280K	104K	0	19	11:03:52 Thu Oct 30 2003
13914	mozilla-bin	silK	silK	S	0.2	995K	104K	0	19	11:03:52 Thu Oct 30 2003
26173	centericq	silK	silK	S	0.1	92K	104K	0	19	11:03:52 Thu Oct 30 2003
32484	xmms	silK	silK	S	0.1	362K	104K	0	19	11:03:52 Thu Oct 30 2003
32488	xmms	silK	silK	S	0.1	362K	104K	0	19	11:03:52 Thu Oct 30 2003

gPS: CPU and Memory (silK)

CPU History

Memory History

	Used	Free	Total
Memory	346740 KB	686552 KB	1033292 KB
Swap	38156 KB	291168 KB	329324 KB

Dismiss

Network Watch Setup

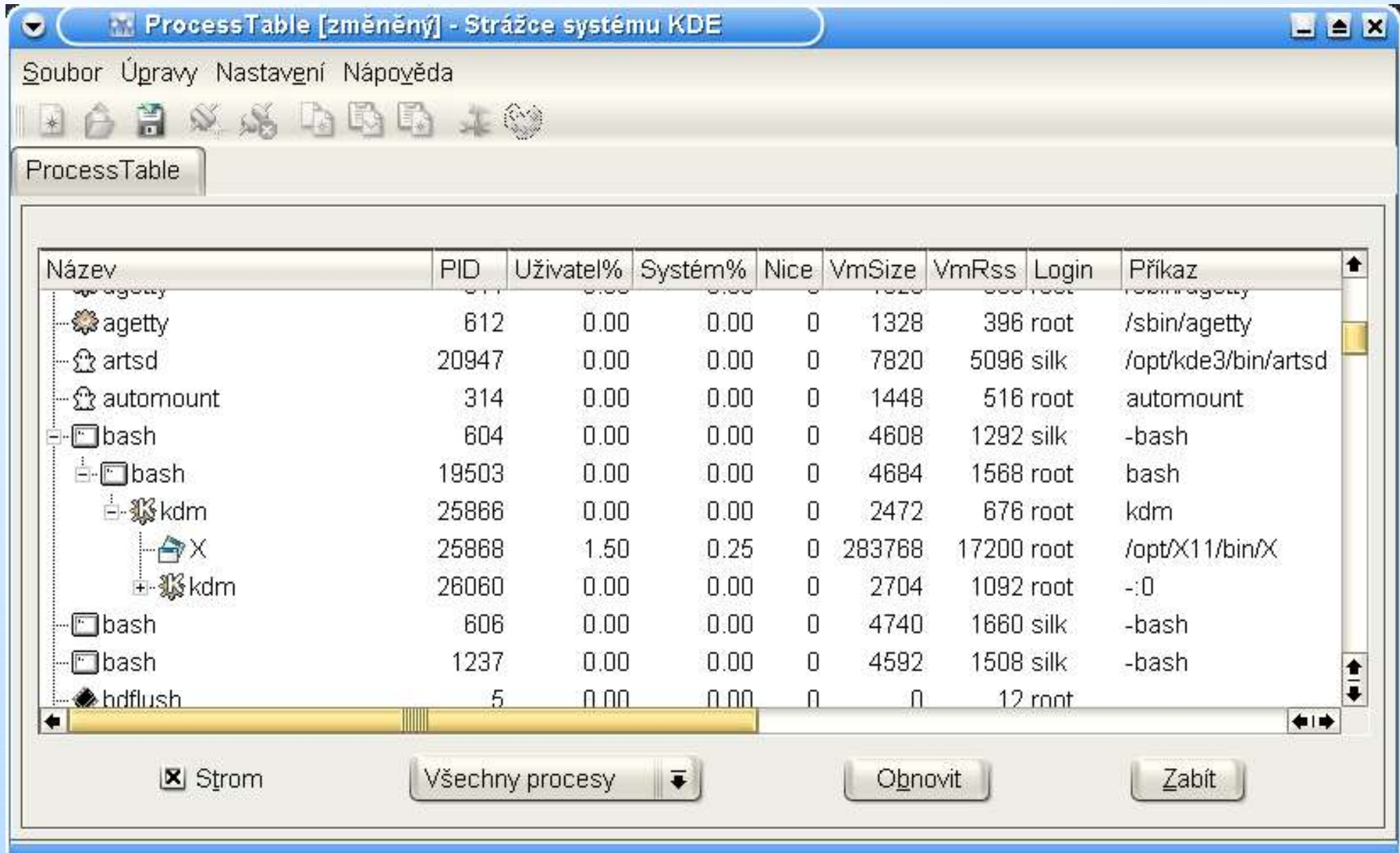
Remote hosts to watch:

Host	Port	Enabled	Connection

Add host Remove host Remove all

Enable/Disable Enable all Disable all

Ok Cancel Help



InstallFest 2003 / Konf. a anal. nástroje – KDE strážce systému


```

Terminal
Soubor Upravit Zobrazit Terminál Přejít Nápověda
Terminal Terminal
top - 20:05:12 up 7 days, 1:34, 8 users, load average: 1.06, 1.27, 1.32
Tasks: 136 total, 5 running, 131 sleeping, 0 stopped, 0 zombie
Cpu(s): 15.7% user, 6.1% system, 78.3% nice, 0.0% idle
Mem: 1033292k total, 982192k used, 51100k free, 165488k buffers
Swap: 329324k total, 31416k used, 297908k free, 559896k cached

  PID USER      PR  NI  VIRT  RES  SHR  S  %CPU  %MEM    TIME+  Command
 2817 silk      20  19  4776 4756  728  R  78.1  0.5  880:42.49 FahCore_65.exe
26856 silk       9   0 17460  17m  11m  S   6.7  1.7   0:09.03 gnome-terminal
26760 root        9   0  294m  38m  12m  R   4.4  3.8   0:10.26 X
27707 silk      15   0   828  828  628  R   2.2  0.1   0:00.20 top
26811 silk       9   0  7092 7092 5316  S   1.9  0.7   0:01.36 metacity
  263 root       10   0   444  412  388  S   1.0  0.0   1:48.45 gpm
26777 silk       9   0  3580 3580 2884  R   1.0  0.3   0:00.95 at-spi-registry
26823 silk       9   0  3840 3840 2944  S   1.0  0.4   0:03.90 gkrellm
26948 silk       9   0 88520  86m  48m  S   1.0  8.6   0:12.41 soffice.bin
27382 silk       9   0 21216  20m 4292  S   1.0  2.1   0:01.45 gimp
26809 silk       9   0  2772 2772 2168  S   0.3  0.3   0:00.19 gnome-smproxy
26814 silk       9   0 17384  16m 9.8m  S   0.3  1.7   0:01.07 nautilus
26816 silk       9   0 12536  12m 8916  S   0.3  1.2   0:01.10 gnome-panel
26836 silk       9   0  9504 9504 7168  S   0.3  0.9   0:01.08 wnck-applet
   1 root        8   0   488  476  444  S   0.0  0.0   0:04.67 init
   2 root        9   0     0     0     0  S   0.0  0.0   0:03.63 keventd
   3 root       19  19     0     0     0  S   0.0  0.0   0:00.26 ksoftirqd_CPU0
   4 root        9   0     0     0     0  S   0.0  0.0   0:07.73 kswapd
   5 root        9   0     0     0     0  S   0.0  0.0   0:00.00 bdflush
   6 root        9   0     0     0     0  S   0.0  0.0   0:44.99 kupdated
   7 root        9   0     0     0     0  S   0.0  0.0   0:00.00 khubd
   8 root        9   0     0     0     0  S   0.0  0.0   0:00.18 kreiserfsd
  54 root        9   0   820   748  548  S   0.0  0.1   0:00.28 devfsd

```

```

silk@silk:~$ ps aux
USER      PID  %CPU  %MEM    VSZ   RSS TTY      STAT START   TIME COMMAND
root         1   0.0   0.0   1344   476 ?        S    Oct21   0:04  init [5]
root         2   0.0   0.0     0     0 ?        SW   Oct21   0:03  [keventd]
root         3   0.0   0.0     0     0 ?        SWN  Oct21   0:00  [ksoftirqd_CPU0]
root         4   0.0   0.0     0     0 ?        SW   Oct21   0:07  [kswapd]
root         5   0.0   0.0     0     0 ?        SW   Oct21   0:00  [bdflush]
root         6   0.0   0.0     0     0 ?        SW   Oct21   0:45  [kupdated]
root         7   0.0   0.0     0     0 ?        SW   Oct21   0:00  [khubd]
root         8   0.0   0.0     0     0 ?        SW   Oct21   0:00  [kreiserfsd]
root        54   0.0   0.0   1596   748 ?        S    Oct21   0:00  /sbin/devfsd /dev
root        81   0.0   0.0     0     0 ?        SW<  Oct21   0:23  [loop2]
root        83   0.0   0.0     0     0 ?        SW<  Oct21   2:39  [loop4]
root       176   0.0   0.0     0     0 ?        SW   Oct21   0:00  [eth0]
root       205   0.0   0.0   1408   544 ?        S    Oct21   0:00  /usr/sbin/syslogd
root       219   0.0   0.0   2232   428 ?        S    Oct21   0:00  /usr/sbin/klogd
root       233   0.0   0.0   1376   524 ?        S    Oct21   0:00  /usr/sbin/crond -l10
daemon    247   0.0   0.0   2860   828 ?        S    Oct21   0:00  lpd Waiting

```

```

silk@silk:/$ ps ux
USER      PID  %CPU  %MEM    VSZ   RSS TTY      STAT START   TIME COMMAND
silk      549   0.0   0.1  16504  1736 ?        S    Oct21   0:08  ./FAH3Console-LinuxB.exe
silk      604   0.0   0.1   4608  1292 vc/1    S    Oct21   0:00  -bash
silk      606   0.0   0.1   4740  1648 vc/3    S    Oct21   0:00  -bash
silk      620   0.0   0.1  16504  1736 ?        S    Oct21   0:00  ./FAH3Console-LinuxB.exe
silk      621   0.0   0.1  16504  1736 ?        S    Oct21   0:00  ./FAH3Console-LinuxB.exe
silk      622   0.0   0.1  16504  1736 ?        S    Oct21   0:00  ./FAH3Console-LinuxB.exe
silk    31424   0.0   0.0   2064   832 ?        S    Oct23   0:00  /opt/gnome/bin/esd -terminate -no beep
silk     9955   0.0   0.1  17136  1956 ?        S    Oct24   0:00  pluginapp.bin 26 /opt/mozilla/lib/moz
silk     9956   0.0   0.1  17136  1956 ?        S    Oct24   0:00  pluginapp.bin 26 /opt/mozilla/lib/moz
silk     9957   0.0   0.1  17136  1956 ?        S    Oct24   0:00  pluginapp.bin 26 /opt/mozilla/lib/moz
silk     1237   0.0   0.1   4592  1496 vc/2    S    Oct26   0:00  -bash
silk     2814   0.0   0.1  16504  1736 ?        S    03:43   0:00  ./FAH3Console-LinuxB.exe
silk     2815   0.0   0.4  60252  4568 ?        SN   03:43   0:00  ./FahCore_65.exe -dir work/ -suffix 0
silk     2816   0.0   0.4  60252  4568 ?        SN   03:43   0:00  ./FahCore_65.exe -dir work/ -suffix 0
silk     2817  89.8   0.4  60252  4568 ?        RN   03:43  937:18  ./FahCore_65.exe -dir work/ -suffix 0
silk    20947   0.0   0.4   7820  5084 ?        S    19:22   0:00  /opt/kde3/bin/artsd -F 10 -S 4096 -s
silk    26746   0.0   0.1   4404  1144 vc/1    S    19:58   0:00  /bin/sh /usr/X11/bin/startx

```



```

root@silk:/var/log# w
 20:47:26 up 7 days,  2:16,  9 users,  load average: 1,17, 1,23, 1,25
USER      TTY      LOGIN@  IDLE   JCPU   PCPU   WHAT
silk      vc/1     21Oct03 48:42  1.85s  0.01s  /bin/sh /usr/X11/bin/startx
silk      vc/2     19:20   1:06m  0.03s  0.03s  -bash
silk      vc/3     19:25   52:23  0.13s  0.13s  -bash
silk      pts/4    20:11   4:17   1.54s  1.49s  centericq
silk      pts/5    20:19   0:00s  0.30s  28.56s  gnome-terminal --geometry=100x35
warlord   pts/0    19:10   1:33m  0.06s  0.01s  less Makefile
warlord   pts/2    09:37   1:14m  0.36s  0.36s  -bash
silk      pts/6    20:31   1:57   1.14s  0.06s  -bash

```

```

root@silk:/var/log# who
silk      vc/1          Oct 21 19:34
silk      vc/2          Oct 28 19:20
silk      vc/3          Oct 28 19:25
silk      pts/3         Oct 23 13:06 (:0.0)
silk      pts/4         Oct 28 20:11 (:0.0)
silk      pts/5         Oct 28 20:19 (:0.0)
warlord   pts/0         Oct 28 19:10 (scrymag.sh.cvut.cz)
warlord   pts/2         Oct 28 09:37 (scrymag.sh.cvut.cz)
silk      pts/6         Oct 28 20:31 (:0.0)

```

```

root@silk:/var/log# last warlord
warlord pts/0      scrymag.sh.cvut. Tue Oct 28 19:10   still logged in
warlord pts/7      scrymag.sh.cvut. Tue Oct 28 12:24 - 18:31   (06:06)
warlord pts/2      scrymag.sh.cvut. Tue Oct 28 09:37   still logged in
warlord pts/5      scrymag.sh.cvut. Mon Oct 27 20:21 - 20:42   (00:21)
warlord pts/4      scrymag.sh.cvut. Mon Oct 27 10:23 - 10:23   (00:00)
warlord pts/5      scrymag.sh.cvut. Thu Oct 23 22:12 - 00:11   (01:59)
warlord pts/4      scrymag.sh.cvut. Thu Oct 23 17:13 - 17:13   (00:00)
warlord pts/6      scrymag.sh.cvut. Wed Oct 22 13:42 - 13:48   (00:06)
warlord pts/7      80.95.96.35      Tue Oct 21 22:32 - 22:35   (00:03)
warlord pts/2      scrymag.sh.cvut. Mon Oct 20 18:14 - 20:35   (02:21)
warlord pts/6      scrymag.sh.cvut. Mon Oct 20 10:48 - 11:07   (00:19)
warlord pts/6      scrymag.sh.cvut. Mon Oct 20 10:18 - 10:47   (00:29)
warlord pts/3      scrymag.sh.cvut. Mon Oct 20 10:13 - 11:07   (00:54)
warlord pts/3      scrymag.sh.cvut. Mon Oct 20 09:59 - 10:09   (00:10)
warlord pts/6      scrymag.sh.cvut. Mon Oct 20 09:49 - 09:51   (00:02)
warlord pts/3      scrymag.sh.cvut. Mon Oct 20 09:42 - 09:51   (00:09)
warlord pts/0      scrymag.sh.cvut. Thu Oct 16 13:04 - 13:06   (00:02)
warlord pts/3      grblue5.felk.cvu Thu Oct 16 09:36 - 09:42   (00:05)
warlord pts/5      scrymag.sh.cvut. Fri Oct 10 10:01 - 10:08   (00:06)
warlord pts/6      scrymag.sh.cvut. Fri Oct 10 01:57 - 02:00   (00:02)
warlord pts/6      scrymag.sh.cvut. Fri Oct 10 01:32 - 01:32   (00:00)
warlord pts/6      scrymag.sh.cvut. Thu Oct 9 19:43 - 19:44   (00:00)
warlord pts/7      pc-310-34.felk.c Wed Oct 8 12:56 - 13:29   (00:32)

```

```

silk@silk:/var/ftp/pub$ df
Filesystem          1K-blocks      Used Available Use% Mounted on
/dev/ide/host0/bus0/target0/lun0/part1
                    2048188       908872   1139316   45% /
/dev/loop/2         8401728       6750496   1651232   81% /home
/dev/loop/4         49269844      44798780   4471064   91% /var
tmpfs                131072         0         131072    0% /dev/shm
tmpfs                409600         6084      403516    2% /tmp
/var/opt             49269844      44798780   4471064   91% /opt

```

```

silk@silk:/var/ftp/pub$ free
              total        used         free      shared    buffers     cached
Mem:          1033292      1006080         27212           0         73396      684912
-/+ buffers/cache:      247772         785520
Swap:         329324         38596         290728

```

```

silk@silk:/var/ftp/pub$ uptime
 9:15  běží 7 days 2:44,  9 users,  průměrná zátěž:  1,07,  1,16,  1,18

```

Děkuji za pozornost

Konfigurační a analytické nástroje

InstallFest 2003